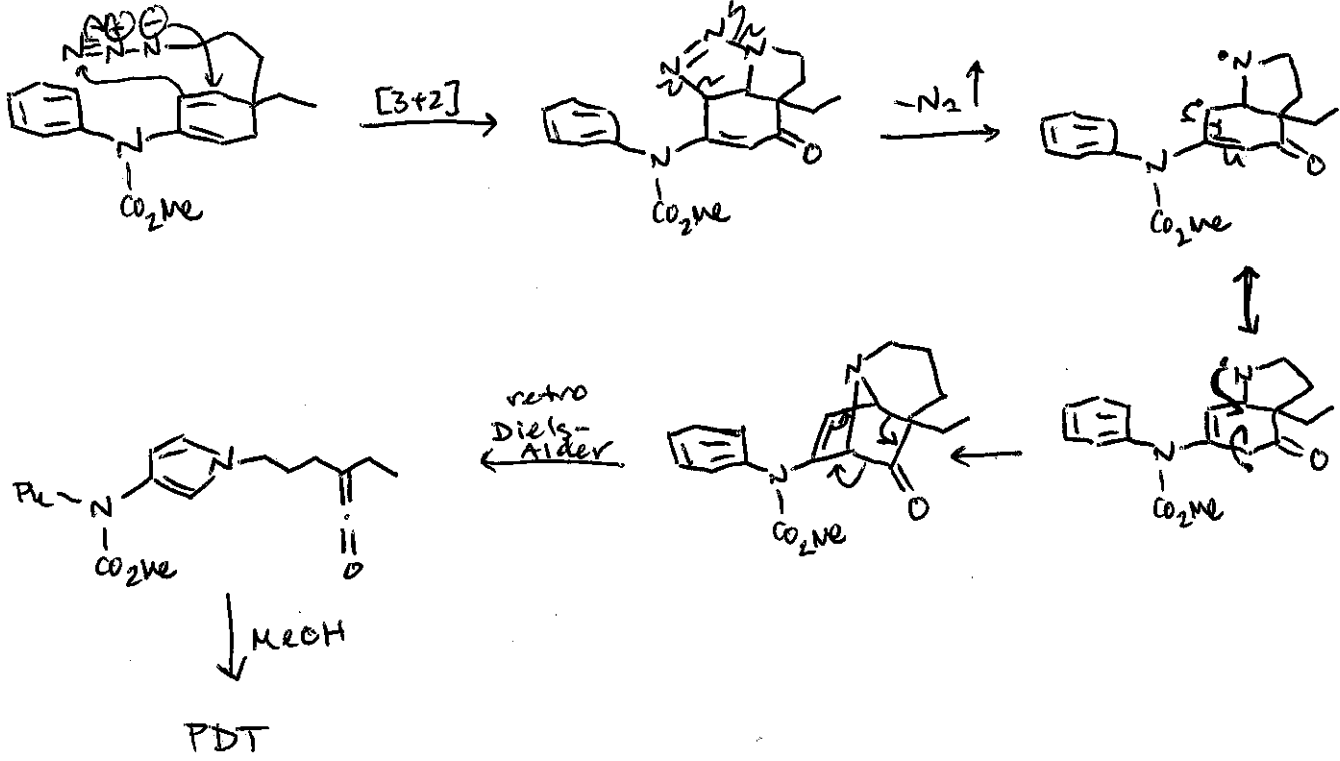
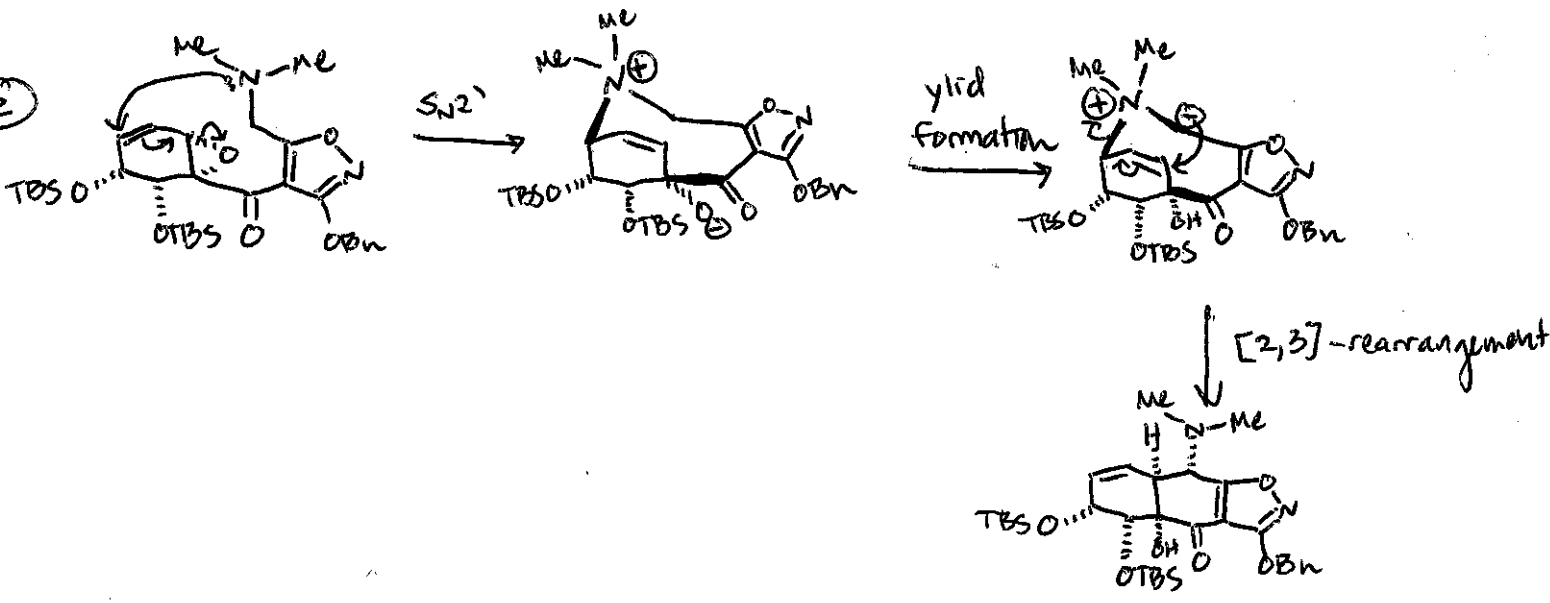


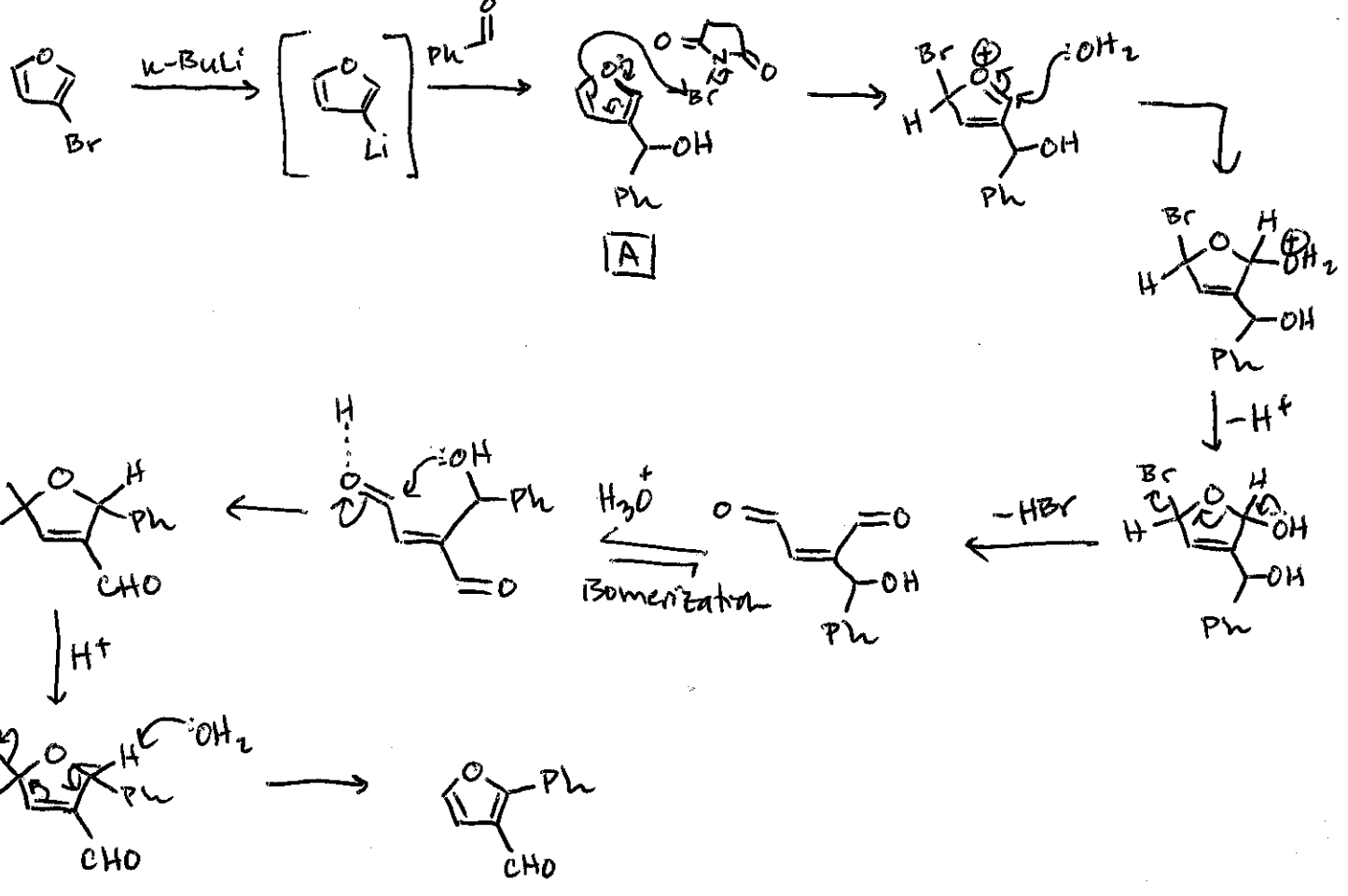
①



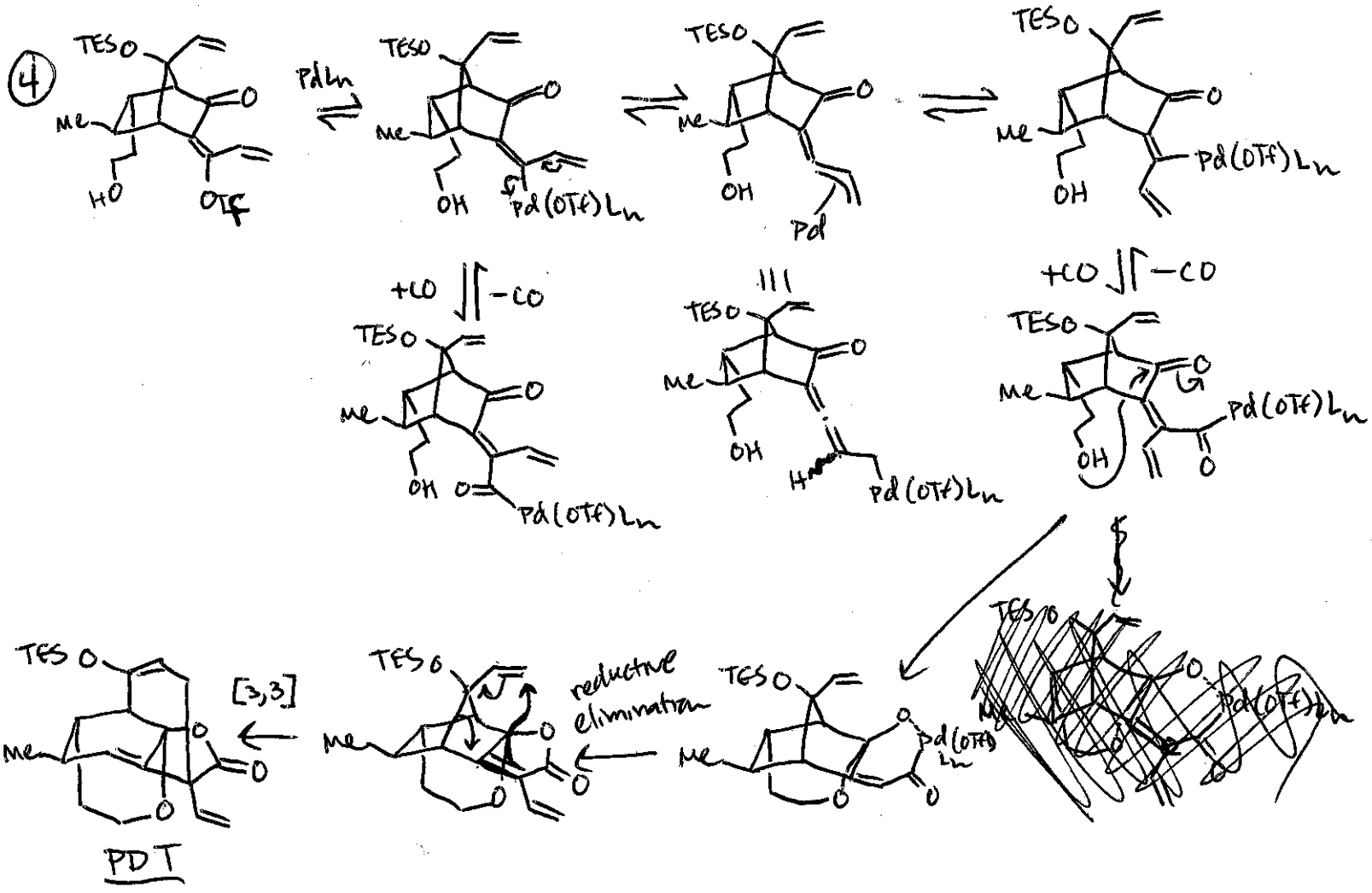
②



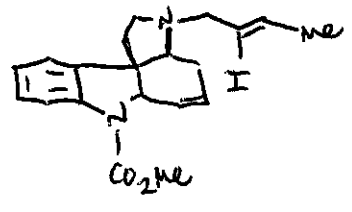
3.



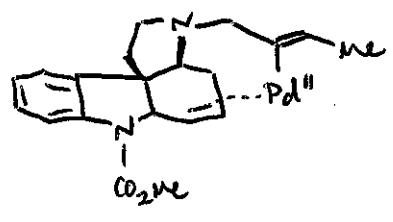
4.



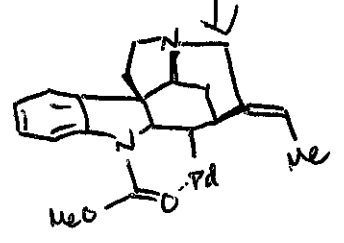
5



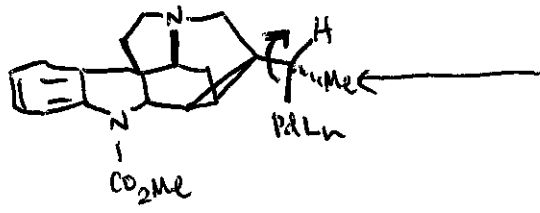
Pd^{II}
↓ Jeffrey conditions
 Pd^0



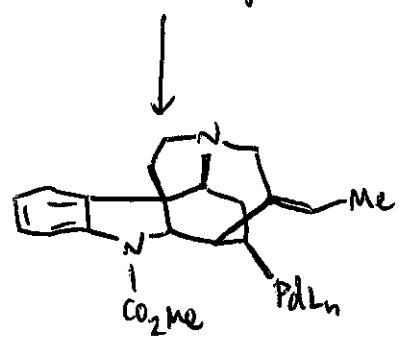
carbopalladation



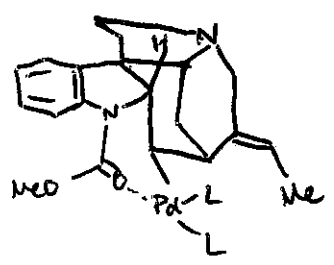
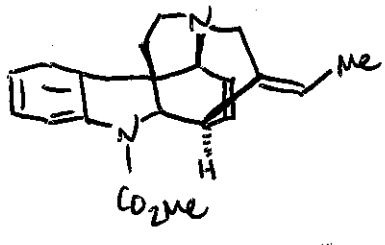
σ -bond rotation



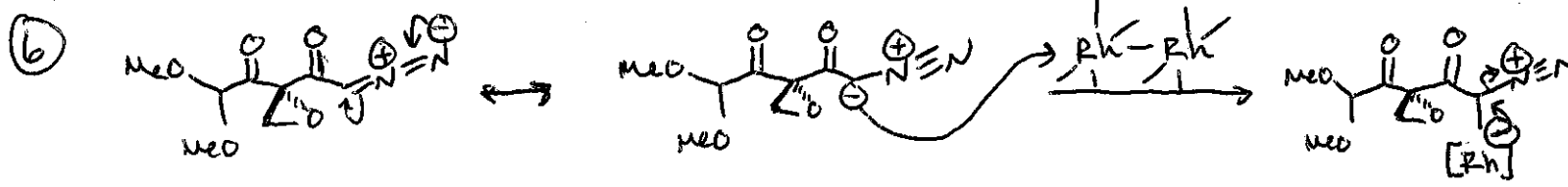
anti-periplanar cyclopropane bond to Pd fragments



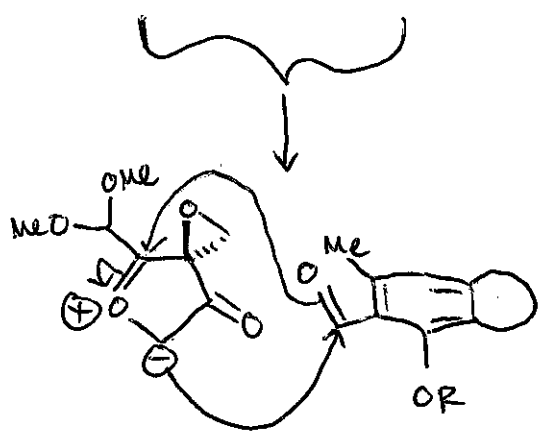
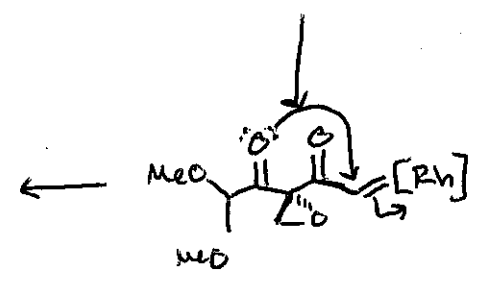
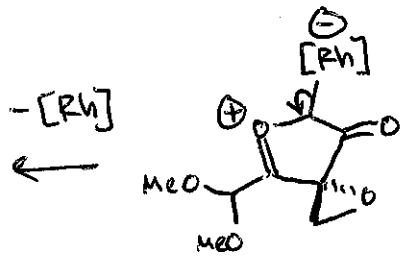
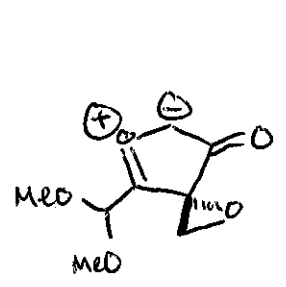
-PdH



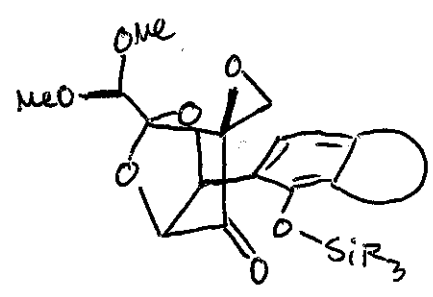
no syn hydrogen available for β -hydride elimination



Carbonyl
ylide



[2+3]



TEA·3HF
deprotect

PRODUCT

